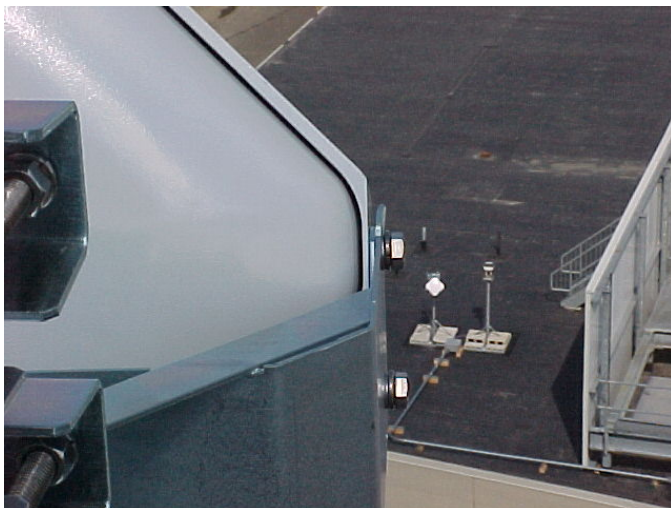


# FASTLINKS

## The Broad Institute – Cambridge, MA

The Broad Institute, a research organization funded in part by MIT & Harvard University had run out of space in its main facility and was in a jam. They needed to establish a high capacity (Gigabit Ethernet) LAN connection with a site it planned to occupy temporarily (< 2 years) while a new state of the art facility was being built. Fiber optic services were too costly, so FastLinks was contracted to design & implement a redundant, 1000Base-Fx wireless link between the sites. A hybrid system was deployed, with one link being a FSO system and the other a 60GHz radio system, which provided the needed high capacity and showed a 1-year payback vs. leased fiber.



*FYI – The Broad Institute is a research collaboration of MIT, Harvard University, the Whitehead Institute for Biomedical Research, and affiliated hospitals. Its scientific mission is to create tools for genomic medicine and make them more broadly available to the scientific community, in order to propel the understanding and treatment of disease.*

**FASTLINKS**

[www.wirelesswans.com](http://www.wirelesswans.com)

PO Box 343 . North Scituate, MA 02060 . (781) 545-4306 . Fax (781) 545-4966